

# APERIO select Fleming Plastics to install a LABOTEK central material handling system

AUGUST 2007

**APERIO GROUP manufactures a range of blown polyethylene film products primarily for use in industrial, agricultural and food packaging applications. APERIO selected Fleming Plastics Dynamics to install a major Labotek central material handling system in 2006.**

“ It has now been a little over 13 months since we commenced the installation and completed the commissioning of our Labotek central resin conveying system. The initial decision to go with Fleming Plastics was not arrived at in a hurry, it actually took over 2 years of research, continual discussion and a SWOT analysis by us of potential suppliers to eventually decide on Labotek as the provider for what was to be a rather large investment dollar and a sizable bit of gear.

This project had to be carried out while we operated our Plant, which sometimes can lead to much unexpected downtime. However in this case it was managed to perfection and production interruptions were maintained at the prearranged levels.

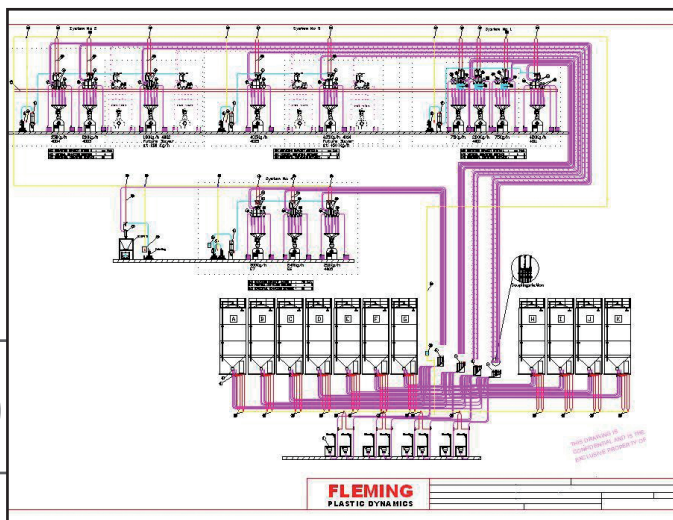
This project has managed to deliver us our projected labour savings and delivers resin into the Plant with very few problems, if any at all.

It is Operator friendly and the design makes it impossible for the incorrect material to be used.

Although it, the installation was not all a bed of roses, we did have the normal small teething problems that were managed by the Labotek / Fleming people in a timely and professional manner. Am I happy with my system, very much so.

**David Cannell**

Operations Manager **Aperio Group - Film Extrusion**



## System Criteria

The system is conveying over 3000kg/hr from 11 material silos & 8 1T bulk bags to 26 individual vacuum receivers. System is split into four mini systems controlled centrally on a 6" Colour Touch screen control based on Siemens Simatic WIN CC Flexible Software and ASI (actuator-sensor interface) fieldbus system. An in-built modem allows external supervision access and all parameters are password protected. A safe material selection coupling station protects operator error against incorrect material connection while allowing full flexibility of any material to any vacuum receiver. Included in the system is a loading by weight system allow automatic loading to mobile material bins to within 5kg.

## RECENT LABOTEK INSTALLATIONS BY FLEMING:

Sistema  
APERIO Group  
ATLAS Plastics  
HP Packaging  
Moulding Services  
Visy Industrial Plastics

Full View Plastics  
Pippak  
Huhtamaki Australia  
Impact International  
Willow Ware  
Ultraplas

Duromer Products  
AMCOR Closures  
Marco Engineering  
Bindweld Plastics  
Toyota  
Plastic Injection Company

**FLEMING**  
Plastics Dynamics  
Your Plastics Ancillary Specialists  
[www.fleming.net.au](http://www.fleming.net.au)