

# Maguire Products – Gravimetric Blender Data Sheet

## Weigh Scale Blender – WSB 241RP Blender

### Design

The WSB 241RP consists of 1 fixed hopper with 2 material compartments fitted with 4 Slide gates for materials with large, 2 Removable hoppers fitted with Vertical Valves and 1 Removable Auger Feeder fitted with a 1" Screw for metering small percentages of Powder or Granules. The materials hopper is mounted on a compact and robust steel frame.

### Operation

- ❖ Each component is dispensed in turn through pneumatic slide gates and the auger feeder.
- ❖ Before the batch commences and after each dispense is made the Controller takes a weight reading to ensure complete accuracy for the materials settings made.
- ❖ The materials are dispensed in turn onto a central weigh bin mounted on two load cells.
- ❖ Each batch is limited by the capacity of the weigh bin at 2000g per batch.
- ❖ When each batch is completed it is released into the mixing chamber.
- ❖ Material levels in the mixing chamber are controlled by a level sensor mounted in the upper part of the mix chamber.
- ❖ When the level of material in the chamber covers the sensor the Control System will pause the blender to ensure consistent and good mixing.
- ❖ Once the blended material level falls below the sensor, the cycle is repeated.
- ❖ Material Dispenses are regulated by the Control System that continuously monitors the set percentages.
- ❖ The Control System ensures that the material settings made remain within tight tolerances. If variations in bulk density occur the Control will automatically adjust dispenses to meet the target settings.
- ❖ Settings are made easily by simply dialling in the percentages of each component on thumbwheels.
- ❖ Alternatively the password access keypad can be used to ensure only authorised personnel to can set, reverse or restrict thumbwheel settings.
- ❖ The flexible software offers a wide range of other functions and can easily be set using the password controlled keypad.
- ❖ Data retrieval is freely available with data available by viewing on the controller screen, connecting a standard printer or by using the Maguire MLAN software that allows you to connect a Computer to the blender.

### Options

#### MECN – Maguire Extrusion Control Network

The blender can be integrated with an extruder to control the extruder speed to ensure consistent kg/hr output. This improves quality, control, and efficiency and reducing materials costs.

**MLAN – Maguire Local Area Network** The blender can be linked to 1 computer to send and retrieve material settings and recipes and provide important material consumption reports for quality control, costs and easy reference on production.

**FCA – Flow Control Assembly** A separate product is available to mount below the blender when it is not mounted directly on the throat. This ensures good mixing and a consistent blend of material.

**VTA-2 Blender Stands** Maguire can supply a stand with material bin (capacity 34Kg) to mount the blender remotely.

For further information on the extensive range Products and Options from Maguire visit [www.maguire.com](http://www.maguire.com).

### Warranty

All Maguire products are covered by a 5 year parts warranty. This is the most comprehensive warranty in the Industry.

### Compliance – CE & Year 2000

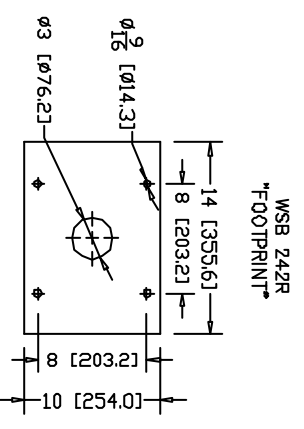
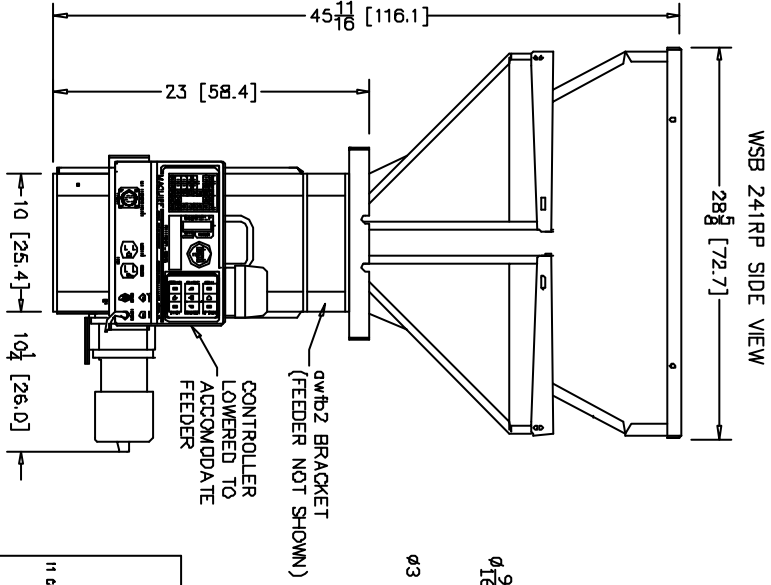
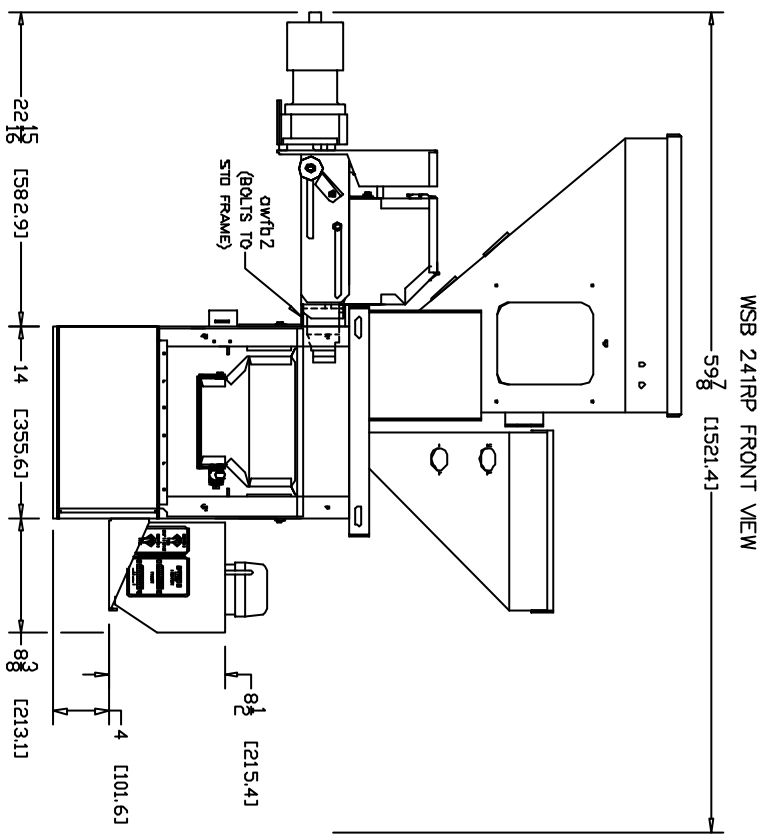
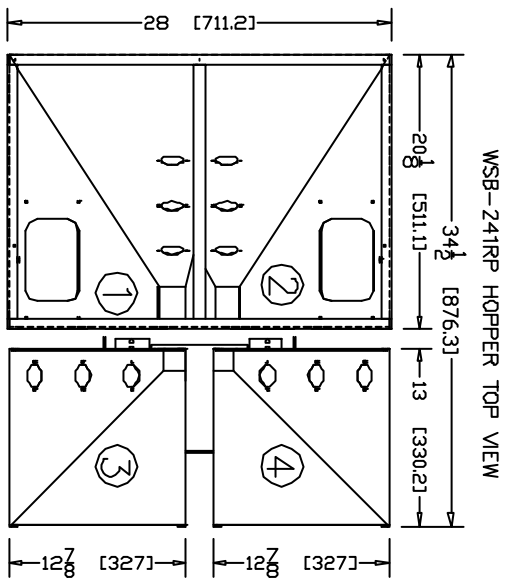
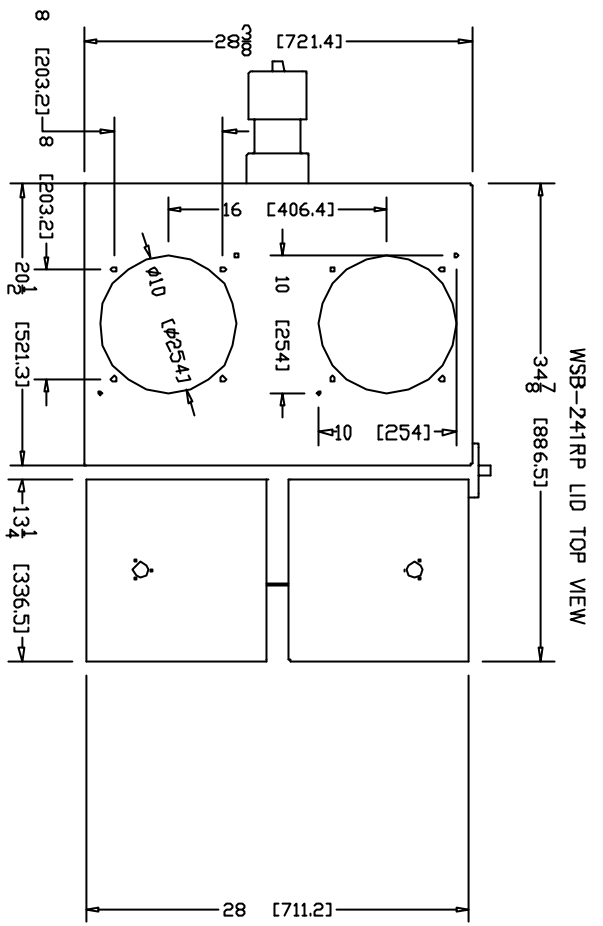
The Maguire blender is fully CE certified and meets all the requirements for Year 2000 compliance.

### Technical Summary

Model	WSB 241RP
Maximum Throughput	300 Kg/hr
Number of Materials	5
Material Dispense System	2 Slide Gates 2 Vertical Valves 1 1" Spiral Feeder
Weight	123 Kg
Power Supply	240 V - 8.0 Amp
Compressed Air Pressure	6 – 8 Bars
Compressed Air Usage	0.3 m <sup>3</sup> /hr

### Shipping Data

Shipping Weight	159Kg
W x H x D	H177 x 112 x 82



STD 14 X 10 WSB BOTTOM PLATE  
 1/4" STEEL PLATE

ALL DIMENSIONS ARE  
 IN INCHES [CENTIMETERS]

<p><b>MAGUIRE PRODUCTS INC</b>          11 Commerce Road, Liberty, PA 16044          Tel: (800) 488-2776          Fax: (814) 338-2776          http://www.maguire.com</p>	<p>WSB 241RP          PICTORIAL</p>
	<p>DATE: 15/02/01          CGC</p>
<p>DRAWN BY:</p>	<p>SHEET 1 OF 1</p>