



# DMD-I

## Desiccant Mobile Dryer

### Optimised for energy saving



## Continuous single bed desiccant mobile dryer

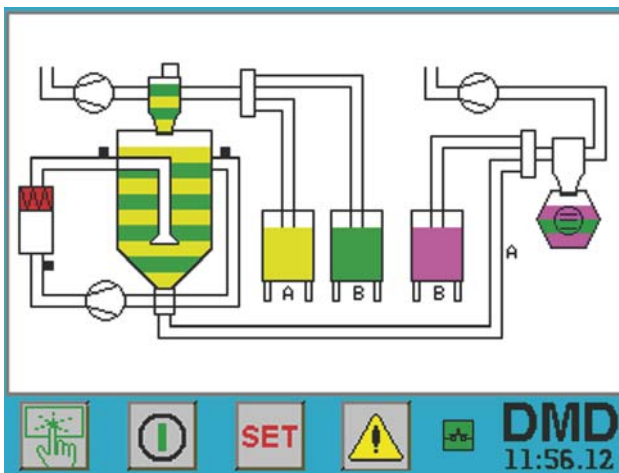
- Significant energy savings via moisture dependant regeneration system.
- Overdrying protection system (LESS).
- Graphic user interface via colour touch screen.
- Available in 5 sizes; 15, 25, 40, 75, and 100 litre.
- All raw material contact points, made of stainless steel.
- Range of drying 60°C-140°C (60°C - 180°C in HT version).
- Filter protected system preventing cross contamination of desiccant bed.
- Build in vacuum conveying control.
- Low noise level.
- Build in vacuum conveying system.
- Closed loop conveying from Drying Hopper.
- 3-Year warranty on molecular sieve.

DMD-I Type	DMD-I 15/15	DMD-I 15/25	DMD-I 25/40	DMD-I 40/75	DMD-I 40/100
Air Volume (m <sup>3</sup> /h)	15	15	25	40	40
Drying Hopper, Sizes (Litre)	15	25	40	75	100
Dewpoint, temp.°C	Better than -35°C				
Drying Time	60-180min.				
Regeneration Time	18-32	20-35	20-35	21-38	21-38
Power Supply	3N ~ 400V 50/60Hz				
Power Consumption Max.	3,3kW	3,3kW	3,7kW	4,2kW	4,2kW
Blower Capacity	1,3kW	1,3kW	1,5kW	1,5W	1,5kW
Standard Drying Temp.	60-140°C				

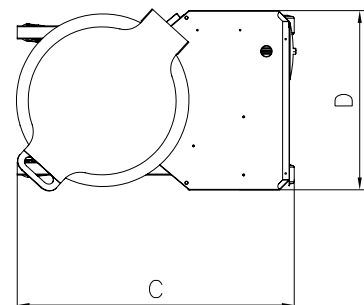
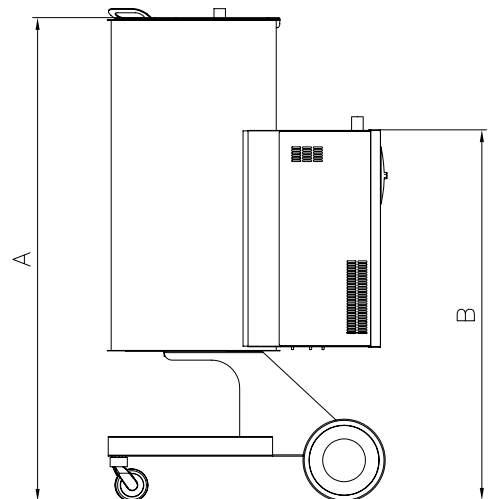
### Options:

- Magnet grid in Catchbox
- Build in dewpoint sensor
- Alarm lamp

Type	DMD 15-15	DMD 15/25	DMD 25/40	DMD 40/75	DMD 40/100
A	1057	1057	1252	1368	1583
B	988	988	988	1117	1117
C	840	840	840	853	853
D			508		



Touch screen with graphic user interface  
 Upgraded software with options integrated



Labotek A/S  
 Strøbjergvej 29  
 DK-3600 Frederikssund  
 Tel: +45 4821 8411  
 Fax: +45 4821 8000  
 E-mail: info@labotek.com  
 www.labotek.com

Manufacturer's Representative: