



## Mobile Hopper



### For Plastics Granule and Similar Materials

**Flexible:**

- Can be moved with fork lift
- Available with wheels - fitted to suit EUR pallet or stack

**Supplied with:**

- 2 connections for suction pipe
- Outlet shutter
- Hinged cover with shutter
- Oblong inspection glass



The grid is made from strong square tubes and can easily be removed for cleaning



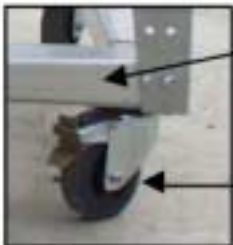
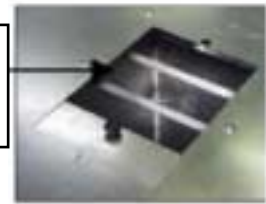
Flat headed bolts are used to minimize the need for cleaning



2 Inspection glasses  
350 x 30 mm

Outlet with shutter  
200 x 110 mm

Shutter in the cover 300 x 200 mm, makes it possible to empty the content of one hopper into another



Strong support beams, make it possible to move the hopper with fork lift

Rubber wheels do not make stains, and 2 wheels have a lock.

### Specifications:

Dimensions: 1220 x 820 x 910 mm (L x W x H)

Contents: 322 Litre

Suction connection: 60 mm outer/52 mm inner.  
other dimensions available



**Labotek A/S**  
Strøbjergvej 29  
DK-3600 Frederikssund  
Tel: +45 4821 8411  
Fax: +45 4821 8000  
E-mail: info@labotek.dk  
www.labotek.com

**Agent:**