

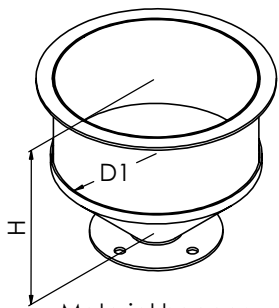


Material Hopper

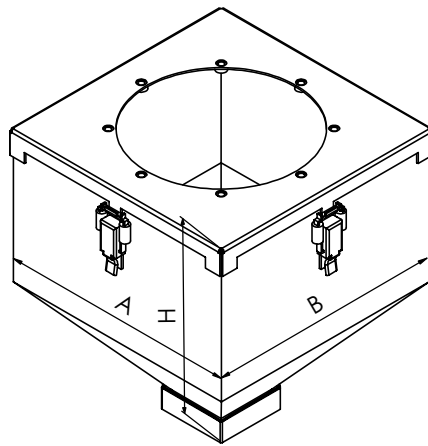


Material Hopper to be Mounted Directly on The Machine Inlet.

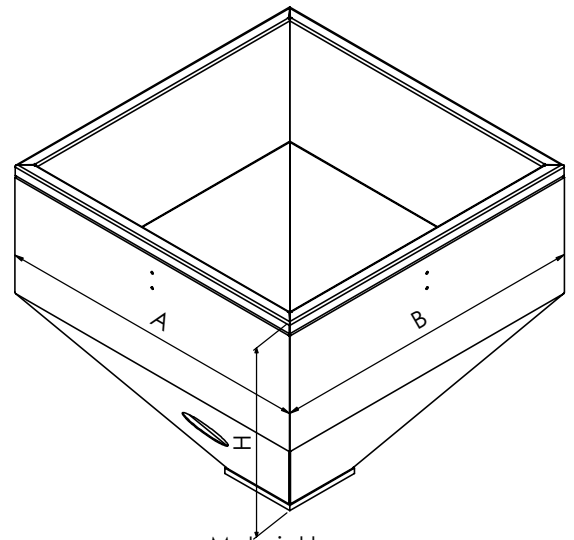
- Capacity from 2 to 200 L
- Made of stainless steel or painted steel
- Lid prepared for SVR conveying bowl
- Flange according to drawing
- Robust design
- Insulated/non-insulated version



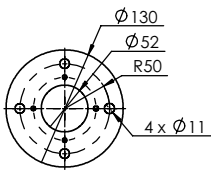
Material hopper
non insulated
2, 5 and 7,5L



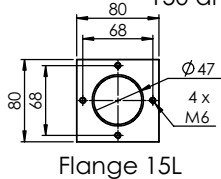
Material hopper
non insulated
15, 25, 50, 75, 100
150 and 200L



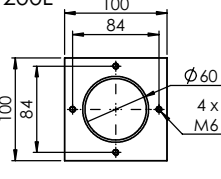
Material hopper
insulated
10, 25, 50, 75, 100
150 and 200L



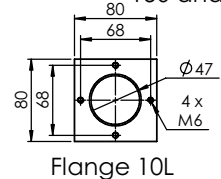
Flange 2L, 5L and 7,5L



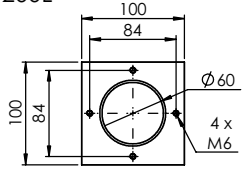
Flange 15L



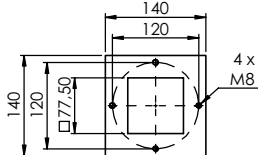
Flange 25L and 50L



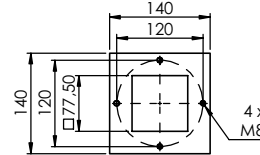
Flange 10L



Flange 25L and 50L



Flange 75L, 100L,
150L and 200L



Flange 75L, 100L,
150L and 200L

Non insulated material hopper

| Type [L] | D1 [mm] | A [mm] | B [mm] | H [mm] | Lid for SVR4-50 | Lid (with door) for SVR4-50 | Lid for SVR75-200 |
|----------|---------|--------|--------|--------|-----------------|-----------------------------|-------------------|
| 2 | Ø200 | - | - | 96,5 | - | - | - |
| 5 | Ø200 | - | - | 183,5 | - | - | - |
| 7,5 | Ø200 | - | - | 263,5 | - | - | - |
| 15 | - | 286 | 286 | 334 | x | | |
| 25 | - | 398 | 398 | 477 | x | x | |
| 50 | - | 398 | 398 | 625 | x | x | |
| 75 | - | 595 | 595 | 580 | | x | x |
| 100 | - | 595 | 595 | 670 | | x | x |
| 150 | - | 595 | 595 | 825 | | x | x |
| 200 | - | 595 | 595 | 965 | | x | x |

Insulated material hopper

| Type [L] | D1 [mm] | A [mm] | B [mm] | H [mm] | Lid for SVR4-50 | Lid (with door) for SVR4-50 | Lid for SVR75-200 |
|----------|---------|--------|--------|--------|-----------------|-----------------------------|-------------------|
| 10 | - | 286 | 286 | 305 | x | | |
| 25 | - | 398 | 398 | 478 | x | x | |
| 50 | - | 398 | 398 | 682 | x | x | |
| 75 | - | 595 | 595 | 580 | | x | x |
| 100 | - | 595 | 595 | 663 | | x | x |
| 150 | - | 595 | 595 | 830 | | x | x |
| 200 | - | 595 | 595 | 998 | | x | x |



Labotek A/S
 Strøbjergvej 29
 DK-3600 Frederikssund
 Tel: +45 4821 8411
 Fax: +45 4821 8000
 E-mail: info@labotek.com
 www.labotek.com

Manufacturer's Representative: