

# Color-Exact PF 1200

- ◆ Color-Exact PF 1200 SM-D
- ◆ Color-Exact PF 1200 DC/D



The **Color-Exact PF 1200** is a new, compact dosing unit designed for feeding of non free flowing powders and colour pigments directly into the neckpiece which is mounted onto the production machine.

The **Color-Exact PF 1200** is characterized by high dosing accuracy and is equipped with an agitator inside the cylindrical shaped material hopper. These features applies to both type **SM-D** with step motor for injection moulding machines and the **DC/D** with DC-motor for Extruder operation (synchronous operation by connection to the Tacho of the Extruder, 0 – 10 V DC).

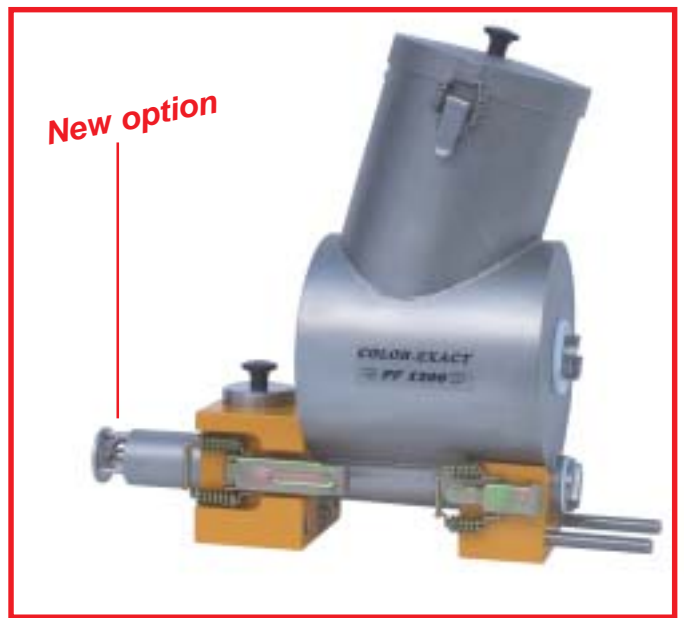
The dosing unit is delivered complete with **PF-neckpiece** and separate control box and intended for direct mounting onto the production machine.

In the construction of the **Color-Exact PF 1200** the material hopper, agitator and dosing combination have been combined into one integrated section to allow easy dismantling of the unit. Therefore cleaning of the unit is very easy with the added bonus of being able to fill the material hopper outside of the production area, which is very important to the working environment. The agitator of the dosing unit is changeable, enabling the facility to dose Masterbatch and other coarse grained materials.

The dosing principle is volumetric and has a special quadrangular dosing spiral with an inside core, giving a very high dosing accuracy.

The **PF-neckpiece** has a built-in covering shield "**Quick-change**" as standard equipment, which not only prevents granule from pouring out when dismantling the material hopper, but also ensures a safe mixing of the dosed material directly into the main stream of the granules, directly above the throat of the production machine auger.

The **PF-neckpiece** is of modular construction, allowing the possibility to mount any type and size of the Color-Exact units to this neckpiece. As an example you can make a combination of one or more dosing units for Masterbatch together with one or more powder dosing units on one single neckpiece.



The cylindrical shaped material hopper of the **Color-Exact PF 1200** is made in stainless steel with a capacity of 4 litres.



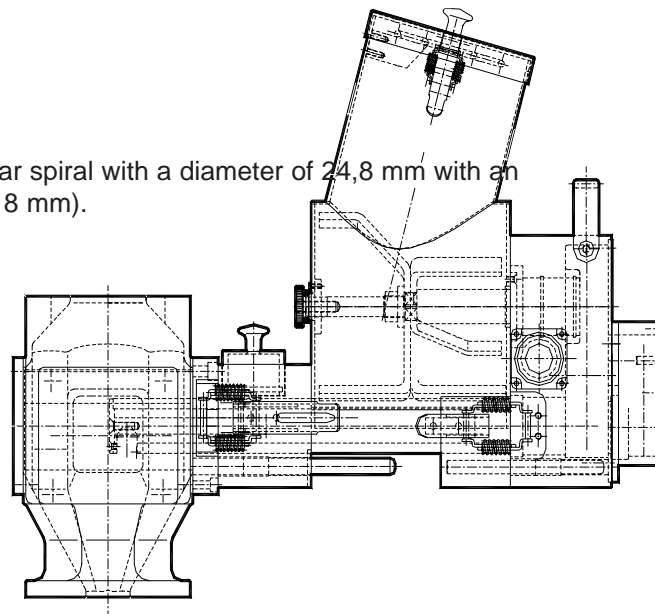
Material hopper, agitator and dosing spiral with inside core are one integrated part of the **Color-Exact PF 1200**



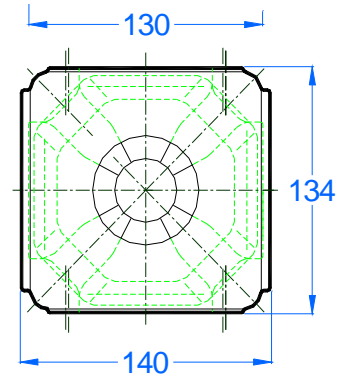
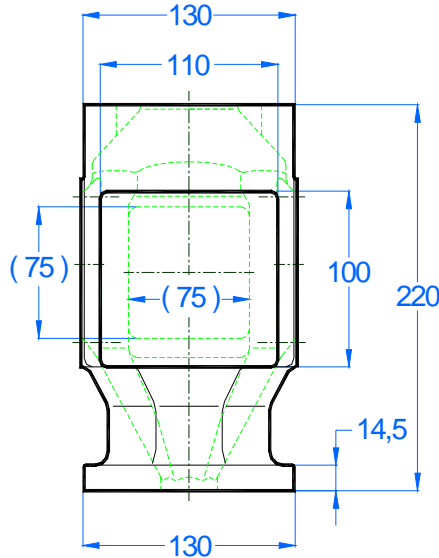
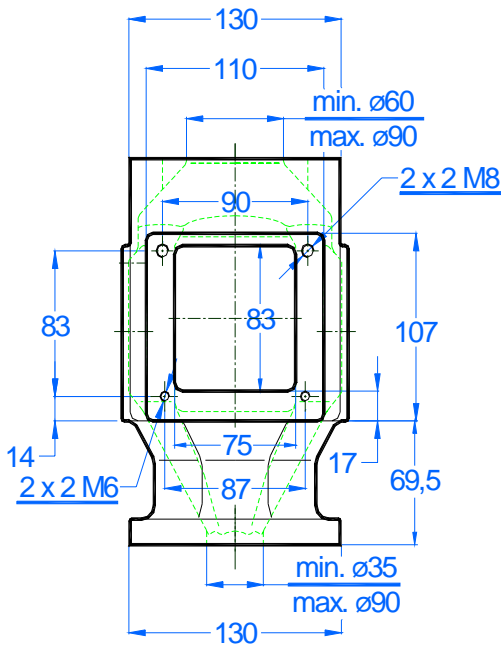
The dosing combination of the **Color-Exact PF 1200** is a quadrangular spiral with a diameter of 24,8 mm with an inside core of 12 mm as standart. (Alternative 10 mm, 15 mm, and 18 mm).

**Technical data:** *Color-Exact PF 1200 SM-D*

◆ Material hopper, total volume	4,0 litre
◆ Material hopper, volume in agitator zone	2,5 litre
◆ Built-in level control	Not possible
◆ Step motor	45 watt
◆ Dosing spiral, r.p.m.	1 – 99
◆ Dosing spiral, revolutions per start impulse	0,01 – 99,99
◆ Diameter of dosing spiral	ø24,8 mm
◆ Inside core of dosing spiral, diameter (Alternative ø10 – ø15 – ø18 mm)	ø12 mm
◆ Dosing capacity, depending on dosing spiral/- core by bulk density 1,0 (1000 grams pr. litre)	80 – 16000 g/h
◆ LED display showing rev. per start impulse	Standard
◆ Agitator speed of rotation	0,34 – 33,67
◆ El. voltage (Alternative)	230 V + earth 115 V
◆ Net weight, total	18,6 kgs
◆ Shipping weight	21,7 kgs
volume	60 x 42 x 43 cm = 0,10 m³

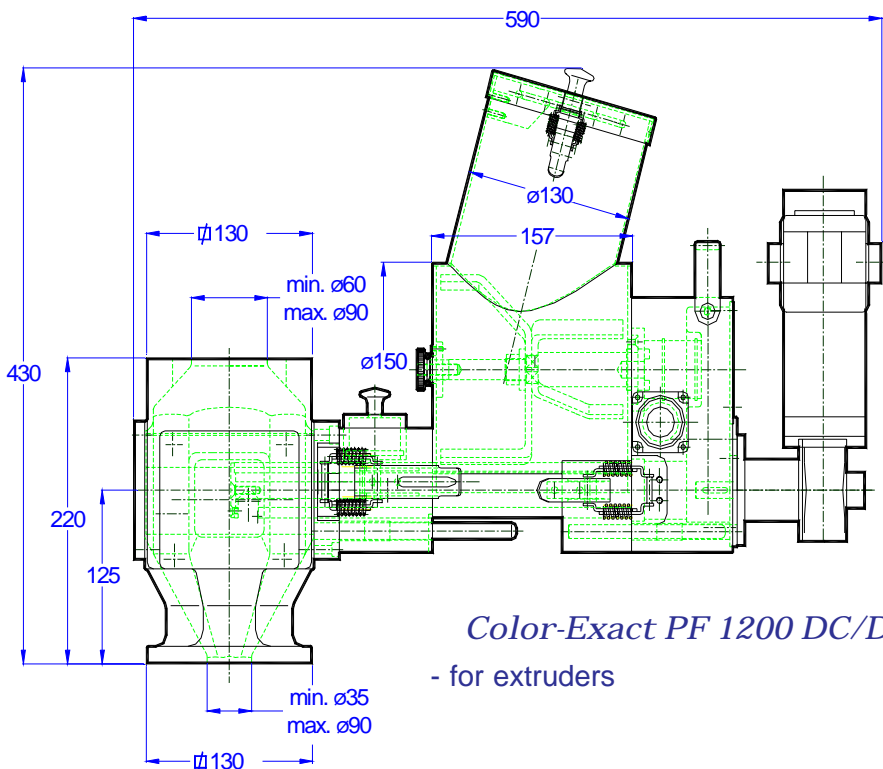


*Color-Exact PF 1200 SM-D*  
- for injection moulding machines



### Color-Exact PF 1200 – neckpiece.

The new PF-neckpiece is delivered with covering shield "Quick-change" mounted in the centre of the neckpiece as standard. This means that no granule will escape when the material hopper section is dismantled and at the same time ensuring a safe mix of the dosed material into the main stream of granules.

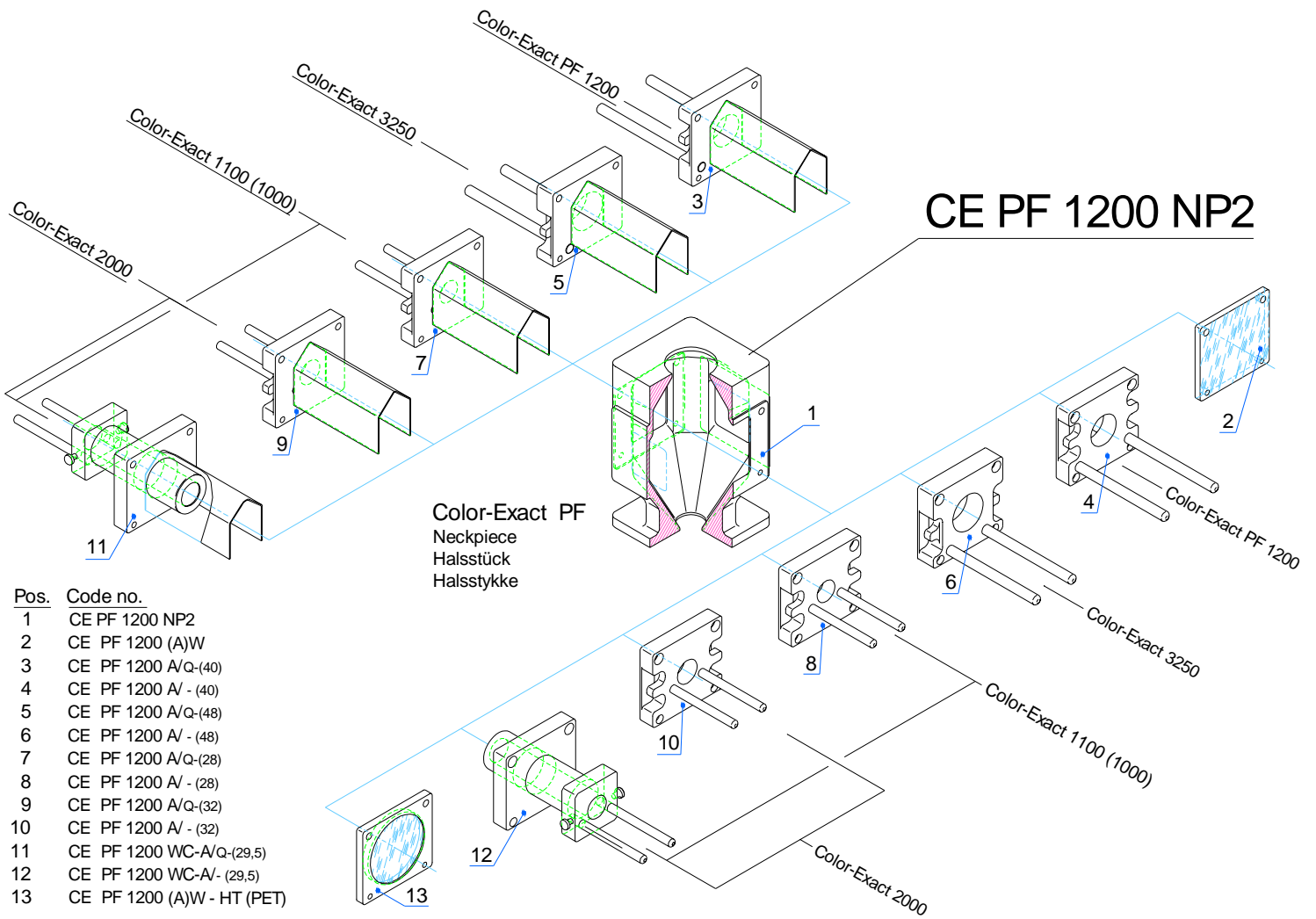


**Color-Exact PF 1200 DC/D**  
- for extruders

### Technical data: Color-Exact PF 1200 DC/D.

- ◆ Material hopper, total volume 4,0 litre
- ◆ Material hopper, volume in agitator zone 2,5 litre
- ◆ Built-in level control Not possible
- ◆ DC - motor 90 watt
- ◆ Dosing spiral r.p.m. with standard reduction 1:2,5 1,0 – 40,0  
with alternative reduction 2,50 – 99,9
- ◆ Diameter of dosing spiral ø24,8 mm
- ◆ Inside core of dosing spiral, diameter ø12 mm  
(Alternative ø10 - ø15 - ø18 mm)
- ◆ Dosing capacity, depending on dosing spiral/- 80 – 16000 g/h  
core, by bulk density 1,0 (1000 grams pr. litre)
- ◆ LED display showing r.p.m. Standard
- ◆ Agitator r.p.m. with standard reduction 0,14 – 13,47  
with alternative reduction 0,34 – 33,67
- ◆ El. voltage 230 V + earth  
(Alternative) 115 V
- ◆ Net weight, total 19,6 kgs
- ◆ Shipping weight volume 22,7 kgs  
60 x 42 x 43 cm = 0,10 m<sup>3</sup>





Pos.	Code no.
1	CE PF 1200 NP2
2	CE PF 1200 (A)W
3	CE PF 1200 A/Q-(40)
4	CE PF 1200 A/ - (40)
5	CE PF 1200 A/Q-(48)
6	CE PF 1200 A/ - (48)
7	CE PF 1200 A/Q-(28)
8	CE PF 1200 A/ - (28)
9	CE PF 1200 A/Q-(32)
10	CE PF 1200 A/ - (32)
11	CE PF 1200 WC-A/Q-(29,5)
12	CE PF 1200 WC-A/ - (29,5)
13	CE PF 1200 (A)W - HT (PET)