

Vacuum Receivers For Pellets and Regrind

Vacuum receivers are an integral part of any central resin conveying system

VR series receivers provide vacuum transfer of plastic pellets and regrinds when used with remote or centralized vacuum pumps, station “T” sequencing valves and controls. Standard models are made for flange-mounting on bins or hoppers. Machine mount packages provide a quick-disconnect glass tube base with integrated vacuum flapper.

Pulsed air blowback can be added to eliminate regrind screen clogging or erratic material flow.

The tangential material inlet provides cyclonic air/material separation. Lids are secured by quick-release, “no-tools” band clamps. An internal material flapper with seal deflects incoming material away from the screen and allows the receiver to be used in common material line systems.

A proportioning valve may be easily added to any model to allow loading (by time) of regrind with virgin material.

Standard Features:

- Electro-polished, modular-design, stainless steel body
- Quick-release clamps for easy cleanout– no tools required
- Integrated “demand” level switch
- Reinforced 20 mesh stainless steel pellet screen
- Inlet/outlet diameters of 1.5” to 4” (3.8 – 10.16 cm)
- Discharge is counter balanced to automatically return to closed position after resin evacuates the receiver
- Material inlet deflector/flapper check valve with neoprene seal
- 24 VDC or 115 VAC control voltage
- Dump valve with integrated level switch included on standard and blowback models– adjustable photo-eye demand and vacuum flapper on machine mount models
- 2 Year Warranty



Many popular features not found on other receivers

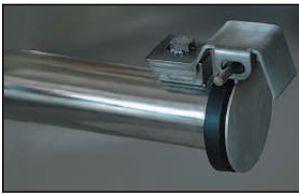


Heavy duty electro-polished stainless steel construction.

Stainless steel band clamp with safety latch provides easy access (requires no tools).



Custom molded neoprene gasket on full-flow dump throat assures tight seal and no loss of vacuum. Unique design keeps resin from contacting gasket surface.



Tangential inlet provides cyclonic flow minimizing material degradation. Internal flapper with neoprene seal allows common line system use.



Expanded aluminum supports 20 mesh stainless steel fines-filter screen.



Machine mount models are supplied with photo eye level sensors, base plate adapter and quick disconnect clamps for easy clean out.

External Proportioning Valve

External proportioning valve provides proportioning/layering of materials when used on single-inlet receivers. 115V/1ph/50-60 Hz or 24VDC standard. Shipped with coupler.

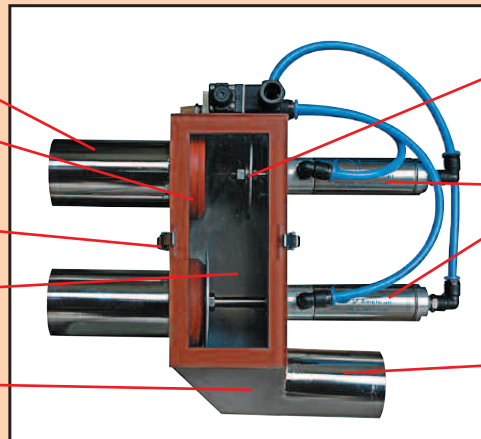
Electro-polished stainless steel body

Flange-mount high-heat silicone seals

Quick-release latches

Polycarbonate access window

Unique design creates turbulent flow to clear material



Stainless steel disc/seat

Positive seal shutoff valve/cylinders

Inlet/outlet diameter 1.5" (38 mm)

Vacuum Receiver Specifications

Part Number	Package	Volume		*Capacity		Standard Line Size		Available Line Size	Pulsed Blowback
		ft ³ .	liters	lb.	kg	in.	cm		
VR-5	Standard	1/8	3.5	5	2.3	1.5	3.8	1.5", 2" or 2.5" (3.8, 5 or 6.4 cm)	
VR-5-B	Blowback								✓
VR-5-MM	Machine Mount								
VR-12	Standard	1/3	9	12	5.4	2	5.08	1.5", 2" or 2.5" (3.8, 5 or 6.4 cm)	
VR-12-B	Blowback								✓
VR-12-MM	Machine Mount								
VR-19	Standard	1/2	14	19	8.6	2	5.08	1.5", 2", 2.5" or 3" (3.8, 5, 6.4, or 7.6 cm)	
VR-19-B	Blowback								✓
VR-19-MM	Machine Mount								
VR-38	Standard	1	28	38	17.2	2.5	6.35	1.5", 2", 2.5" or 3" (3.8, 5, 6.4, or 7.6 cm)	
VR-38-B	Blowback								✓
VR-76	Standard	2	56	76	34.5	2.5	6.35	2", 2.5", 3" or 4" (5, 6.4, 7.6, or 10.16 cm)	
VR-76-B	Blowback								✓
VR-114	Standard	3	84	114	51.7	3	7.62	2", 2.5", 3" or 4" (5, 6.4, 7.6, or 10.16 cm)	
VR-114-B	Blowback								✓

*Resin capacity based on 38 lb./ft³ bulk density.

Options: (No charge)

Alternate Voltage:

115/1/60Hz in lieu 24VDC

Alternate Line Sizes:

1.5 to 4" (3.8 to 7.62cm)

Accessories (Separate line item on order and shipped separately- see price list #310)

Pulsed Blowback Control – Available on all blowback packages

Compact, mini-PLC control for generating adjustable blowback signals when central control is not equipped for receivers with blowback. Installs near receiver.

24VDC = Part # BC-1-24

115/1/60 = Part#BC-1-11

Proportioning Valve Control – Available for all receivers.

Compact mini-PLC control for generating adjustable proportioning signals when central control is not equipped with proportioning capability. Utilizes the receiver's load signal and is located conveniently near the receivers proportioning valve at the receiver. . . not the central control panel.

24VDC = Part # PC-1-24

115/1/60 = Part # PC-1-11

Station "T" Sequencing Valve - Required for all receivers.

Pneumatically operated valve for central loading systems installed directly into main vacuum line and opens or closes vacuum power to the receiver in response to the central control's vacuum sequencing operation. Pop-up valve position indicator allows quick monitoring of system operation. Valve defaults to closed position in the event of air or power loss.

24VDC = Part # SV-xx-24

115/1/60 = Part # SV-xx-11

– Insert correct line size for xx (15, 20,25 or 30) to match receiver line size.

External Proportioning Valve with Coupler – Available for all receivers.

A dual inlet, single outlet valve that couples directly to receiver inlet to allow proportioning of regrind with virgin material during loading.

24VDC= Part # EPV-xx-24

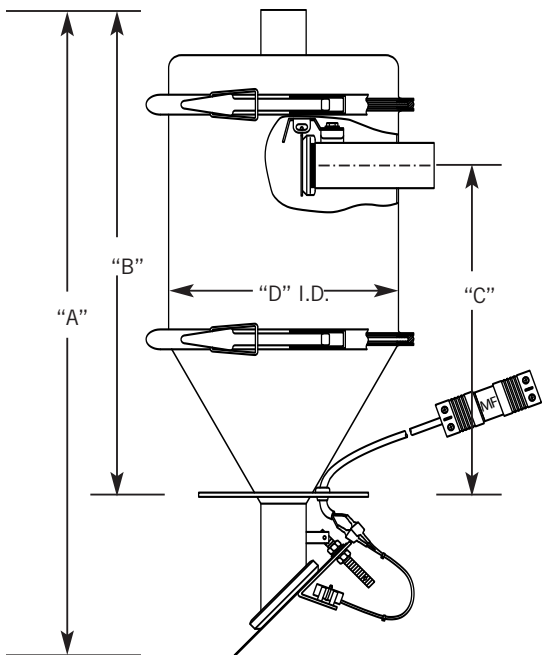
115/1/60 = Part # EPV-xx-11

– Insert correct line size for xx (15, 20,25 or 30) to match receiver line size.



Part Numbering Key For Line Size

- 1.5" = 15
- 2" = 20
- 2.5" = 25
- 3" = 30

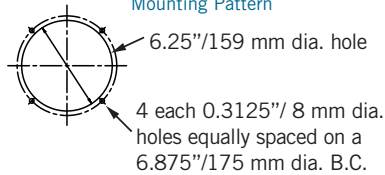


Dimensions & Weights

Hopper Loading Packages										
Part Number	A		B		C		D		Shipping Wgt.	
	in.	cm	in.	cm	in.	cm	in.	cm	lb.	kg
VR-5	18	46	11	27	4.3	11	6	15.2	25	11
VR-12	24	62	18	45	10.6	22	10	25	40	18
VR-19	28	72	22	55	14.6	37	10	25	45	21
VR-38	34	86	25	63	17.7	45	16	41	55	25
VR-76	43	109	35	88	27	69	16	41	65	30
VR-114	42	107	34	87	25	64	24	61	120	55

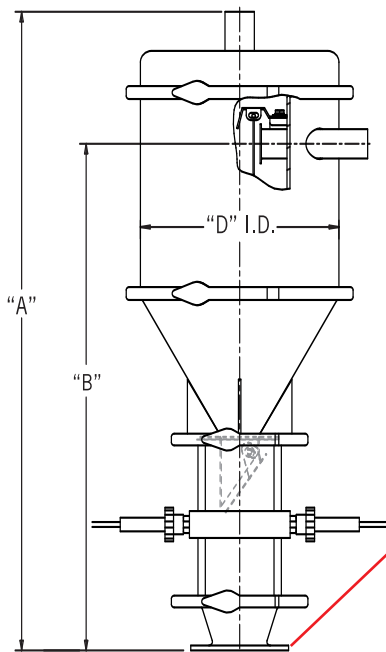
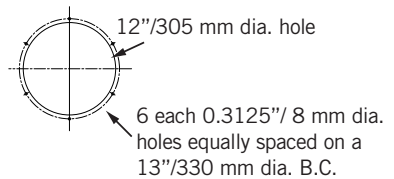
VR-5, VR-12 & VR-19

Mounting Pattern



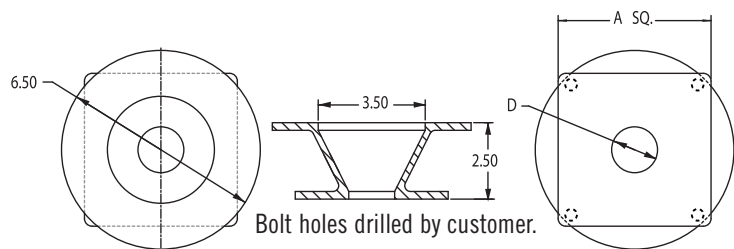
VR-38, VR-76 & VR-114

Mounting Pattern



Machine Mount Adapter

Machine Mount Packages									
Part Number	A		B		D		Shipping Wgt.		
	in.	cm	in.	cm	in.	cm	lb.	kg	
VR-5 MM	22	56	15.6	39.6	6	15.2	30	14	
VR-12 MM	28.6	72.6	22	56	10	25	45	21	
VR-19 MM	32.6	82.8	26	66	10	25	50	23	



Adapter Dimensions

For Part Number	A		D	
	in.	cm	in.	cm
VR-5 MM	5	12.7	1.5	3.81
VR-12 MM	5	12.7	1.5	3.81
VR-19 MM	6.5	16.51	2.25	5.72

Custom Models/Features:

Note that all custom features will be priced accordingly and lead times will be extended beyond those of standard packages and accessories.

- Alternate Receiver sizes
- Inlet/Outlet sizes other than shown above
- High-heat gaskets for inlet and dump valve
- Magnetic, material demand switch
- Hardened deflection plates for abrasive materials

Accepting MasterCard, VISA, American Express

NOVATEC

222 East Thomas Avenue
 Baltimore, Maryland 21225 USA
 Phone: 410-789-4811 • Fax: 410-789-4638
 1-800-BESTDRY (800-237-8379)
 email: sales@novatec.com
 Website: <http://www.novatec.com>